



NATA LIGHTING CO.,LTD.  
www.nata.cn  
Email:info@nata.com  
Tel:+86-750-3770000 Fax:+86-750-3771111  
Address:380JinOu Road,GaoXin Zone,Jiang Men City,Guangdong,China

NT

Client:

LumCAT: 2-2688-L

Luminaire: 92.70.411.00

Report No: 2024402-B025

Ballast type: AC

Test No: 2024402-C025

Voltage(V): 35.190

LampCAT: LUMILEDS LUXEON 1205

Current(A): 0.485

Lamp flux(lm): 2202.0

Power (W): 17.067

Number of Lamps: 1

PF: 0.000

Length(mm): 0

Width(mm): 0

Phm Type: C

Height(mm): 0

### Photometric Results

Lumens(lm): 1824.31, Efficiency(%): 82.85% , Luminous Efficacy(lm/W): 106.89

Central intensity(cd): 4513.167, Maximum intensity(cd): 4516.898

Angle of maximum intensity: C=0.0  $\gamma$ =2.0

Beam Angle(50%Imax): [C0/180]Total=34.8

[C90/270]Total=34.8

Field angle(10%Imax): [C0/180]Total=60.8

[C90/270]Total=60.8

Maximum s/h(1/2): C0\_180=0.57 C90\_270=0.57

Maximum s/h(1/4): C0\_180=0.57 C90\_270=0.57

Up flux rate of lamp(%): 0.00%

Down flux rate of lamp(%): 82.85%

Up flux rate of LUM(%): - -

Down flux rate of LUM(%): 100.00%

CIE Type : Direct lighting

Output flux ratio in  $\pi$  solid angle : 97.826%

Equipment: GMS1980  
Temperature(°C): 25.0

Date: 2024/4/02  
Humidity(%): 60.0%

Operator: NT07  
Distance(m): 7.65

$\gamma(^{\circ})$	Average I(cd)	Zonal F(lm)	Sum F(lm)	Eff Flux(%)	Eff Sum(%)
0.0	4513.167	0.000	0	0.00%	0.00%
1.0	4514.850	4.320	4.32	0.20%	0.24%
2.0	4516.898	12.963	17.283	0.59%	0.95%
3.0	4497.074	21.558	38.841	0.98%	2.13%
4.0	4464.740	29.998	68.839	1.36%	3.77%
5.0	4420.482	38.224	107.063	1.74%	5.87%
6.0	4346.451	46.073	153.136	2.09%	8.39%
7.0	4232.406	53.249	206.385	2.42%	11.31%
8.0	4085.075	59.527	265.911	2.70%	14.58%
9.0	3932.771	64.980	330.892	2.95%	18.14%
10.0	3765.396	69.666	400.557	3.16%	21.96%
11.0	3581.709	73.413	473.97	3.33%	25.98%
12.0	3397.582	76.294	550.263	3.46%	30.16%
13.0	3184.414	78.112	628.375	3.55%	34.44%
14.0	2969.417	78.769	707.144	3.58%	38.76%
15.0	2750.104	78.520	785.664	3.57%	43.07%
16.0	2544.397	77.579	863.243	3.52%	47.32%
17.0	2338.910	76.046	939.289	3.45%	51.49%
18.0	2151.931	74.044	1013.334	3.36%	55.55%
19.0	1955.149	71.455	1084.788	3.24%	59.46%
20.0	1771.535	68.209	1152.997	3.10%	63.20%
21.0	1562.265	64.016	1217.013	2.91%	66.71%
22.0	1379.917	59.124	1276.137	2.69%	69.95%
23.0	1222.381	54.603	1330.74	2.48%	72.95%
24.0	1130.684	51.446	1382.187	2.34%	75.77%
25.0	1012.578	48.733	1430.92	2.21%	78.44%
26.0	891.919	44.956	1475.876	2.04%	80.90%
27.0	773.309	40.740	1516.616	1.85%	83.13%
28.0	659.380	36.273	1552.889	1.65%	85.12%
29.0	567.932	32.110	1584.999	1.46%	86.88%
30.0	482.145	28.352	1613.35	1.29%	88.44%
31.0	401.815	24.599	1637.95	1.12%	89.78%
32.0	333.344	21.061	1659.011	0.96%	90.94%
33.0	288.728	18.326	1677.338	0.83%	91.94%
34.0	237.492	15.925	1693.263	0.72%	92.82%
35.0	178.808	12.929	1706.191	0.59%	93.53%
36.0	134.031	9.961	1716.152	0.45%	94.07%
37.0	105.011	7.796	1723.948	0.35%	94.50%

$\gamma(^{\circ})$	Average I(cd)	Zonal F(lm)	Sum F(lm)	Eff Flux(%)	Eff Sum(%)
38.0	82.743	6.267	1730.215	0.28%	94.84%
39.0	66.430	5.092	1735.307	0.23%	95.12%
40.0	54.367	4.213	1739.52	0.19%	95.35%
41.0	46.474	3.591	1743.111	0.16%	95.55%
42.0	41.185	3.185	1746.296	0.14%	95.72%
43.0	37.469	2.914	1749.21	0.13%	95.88%
44.0	34.448	2.714	1751.924	0.12%	96.03%
45.0	32.217	2.562	1754.486	0.12%	96.17%
46.0	30.395	2.449	1756.934	0.11%	96.31%
47.0	28.800	2.354	1759.289	0.11%	96.44%
48.0	27.454	2.274	1761.563	0.10%	96.56%
49.0	26.255	2.206	1763.769	0.10%	96.68%
50.0	25.194	2.145	1765.914	0.10%	96.80%
51.0	24.272	2.093	1768.006	0.10%	96.91%
52.0	23.372	2.044	1770.051	0.09%	97.03%
53.0	22.487	1.995	1772.046	0.09%	97.14%
54.0	21.639	1.945	1773.991	0.09%	97.24%
55.0	20.849	1.897	1775.887	0.09%	97.35%
56.0	20.066	1.849	1777.736	0.08%	97.45%
57.0	19.247	1.797	1779.534	0.08%	97.55%
58.0	18.537	1.747	1781.281	0.08%	97.64%
59.0	17.864	1.702	1782.983	0.08%	97.73%
60.0	17.206	1.657	1784.639	0.08%	97.83%
61.0	16.547	1.611	1786.25	0.07%	97.91%
62.0	15.962	1.566	1787.817	0.07%	98.00%
63.0	15.450	1.528	1789.344	0.07%	98.08%
64.0	14.989	1.494	1790.838	0.07%	98.17%
65.0	14.587	1.464	1792.302	0.07%	98.25%
66.0	14.272	1.440	1793.742	0.07%	98.32%
67.0	14.272	1.435	1795.177	0.07%	98.40%
68.0	14.309	1.448	1796.625	0.07%	98.48%
69.0	14.411	1.465	1798.09	0.07%	98.56%
70.0	14.689	1.495	1799.584	0.07%	98.64%
71.0	14.901	1.529	1801.114	0.07%	98.73%
72.0	15.194	1.565	1802.679	0.07%	98.81%
73.0	15.157	1.587	1804.266	0.07%	98.90%
74.0	14.967	1.584	1805.849	0.07%	98.99%
75.0	15.238	1.596	1807.445	0.07%	99.08%

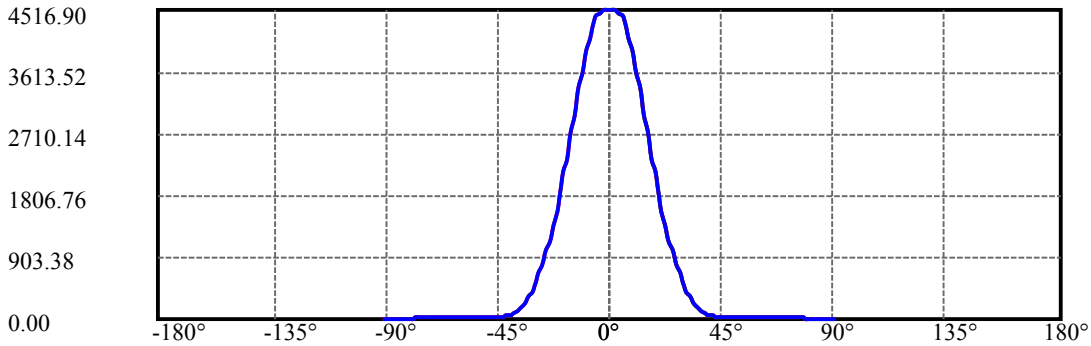
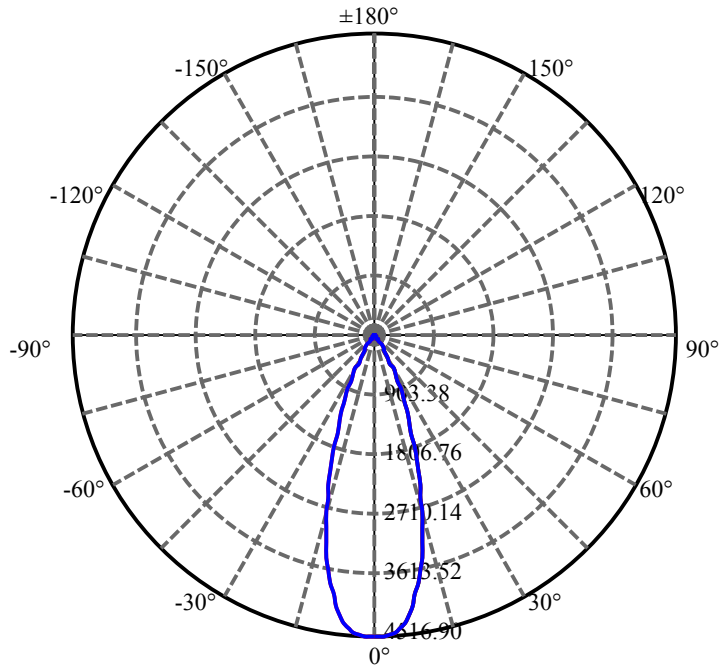
$\gamma(^{\circ})$	Average I(cd)	Zonal F(lm)	Sum F(lm)	Eff Flux(%)	Eff Sum(%)
76.0	14.536	1.580	1809.026	0.07%	99.16%
77.0	14.155	1.530	1810.555	0.07%	99.25%
78.0	13.438	1.477	1812.033	0.07%	99.33%
79.0	12.458	1.391	1813.424	0.06%	99.40%
80.0	11.156	1.273	1814.697	0.06%	99.47%
81.0	9.898	1.139	1815.836	0.05%	99.54%
82.0	9.327	1.043	1816.878	0.05%	99.59%
83.0	9.100	1.002	1817.88	0.05%	99.65%
84.0	8.917	0.982	1818.861	0.04%	99.70%
85.0	8.764	0.965	1819.826	0.04%	99.75%
86.0	8.405	0.938	1820.765	0.04%	99.81%
87.0	8.193	0.908	1821.673	0.04%	99.86%
88.0	8.032	0.889	1822.562	0.04%	99.90%
89.0	7.937	0.875	1823.437	0.04%	99.95%
90.0	7.893	0.868	1824.305	0.04%	100.00%

ZONAL LUMEN SUMMARY

Zone	Lumens	%Lamp	%Fixt
0-30	1613.35	73.27%	88.44%
0-40	1739.52	79.00%	95.35%
0-60	1784.64	81.05%	97.83%
0-90	1823.44	82.81%	99.95%
0-120	1823.44	82.81%	99.95%
0-180	1824.31	82.85%	100.00%
60-90	38.80	1.76%	2.13%
90-120	0.00	0.00%	0.00%
90-130	0.00	0.00%	0.00%
90-150	0.00	0.00%	0.00%
90-180	0.00	0.00%	0.00%
0-25.63	1459.44	66.28%	80.00%

ZONAL LUMEN SUMMARY

0-10	400.56
10-20	752.44
20-30	460.35
30-40	126.17
40-50	26.39
50-60	18.73
60-70	14.94
70-80	15.11
80-90	8.74
90-100	0.00
100-110	0.00
110-120	0.00
120-130	0.00
130-140	0.00
140-150	0.00
150-160	0.00
160-170	0.00
170-180	0.00



C0(Max): —————

C0/C180: —————

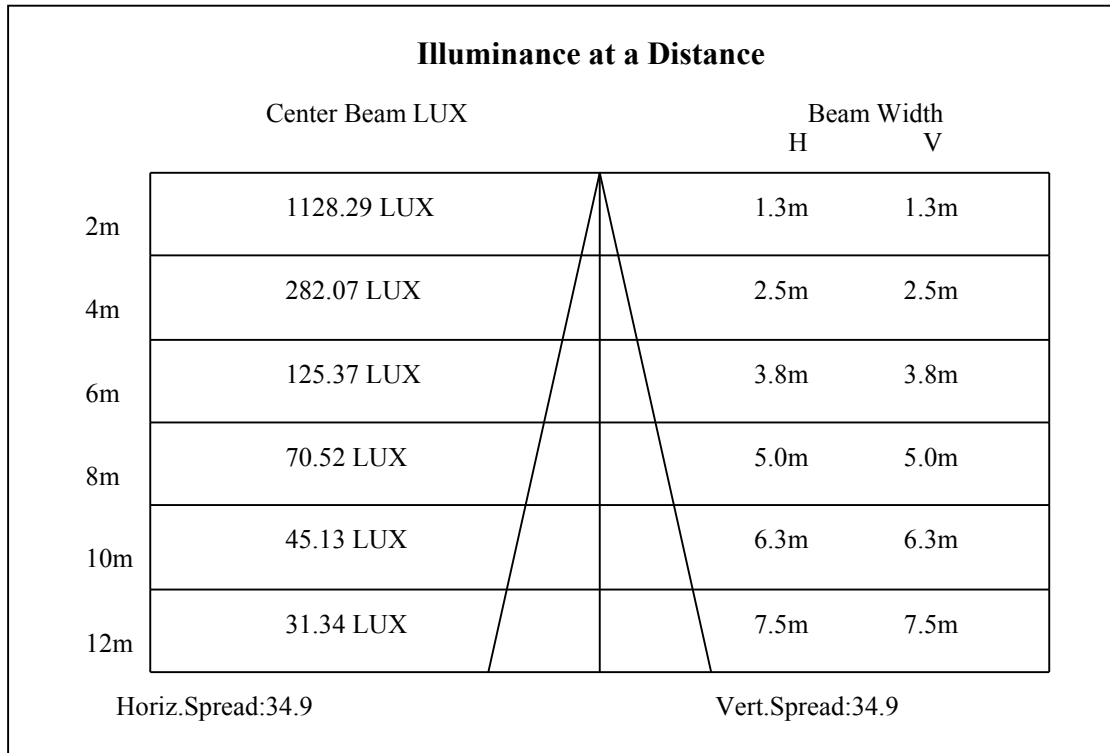
C90/C270: —————

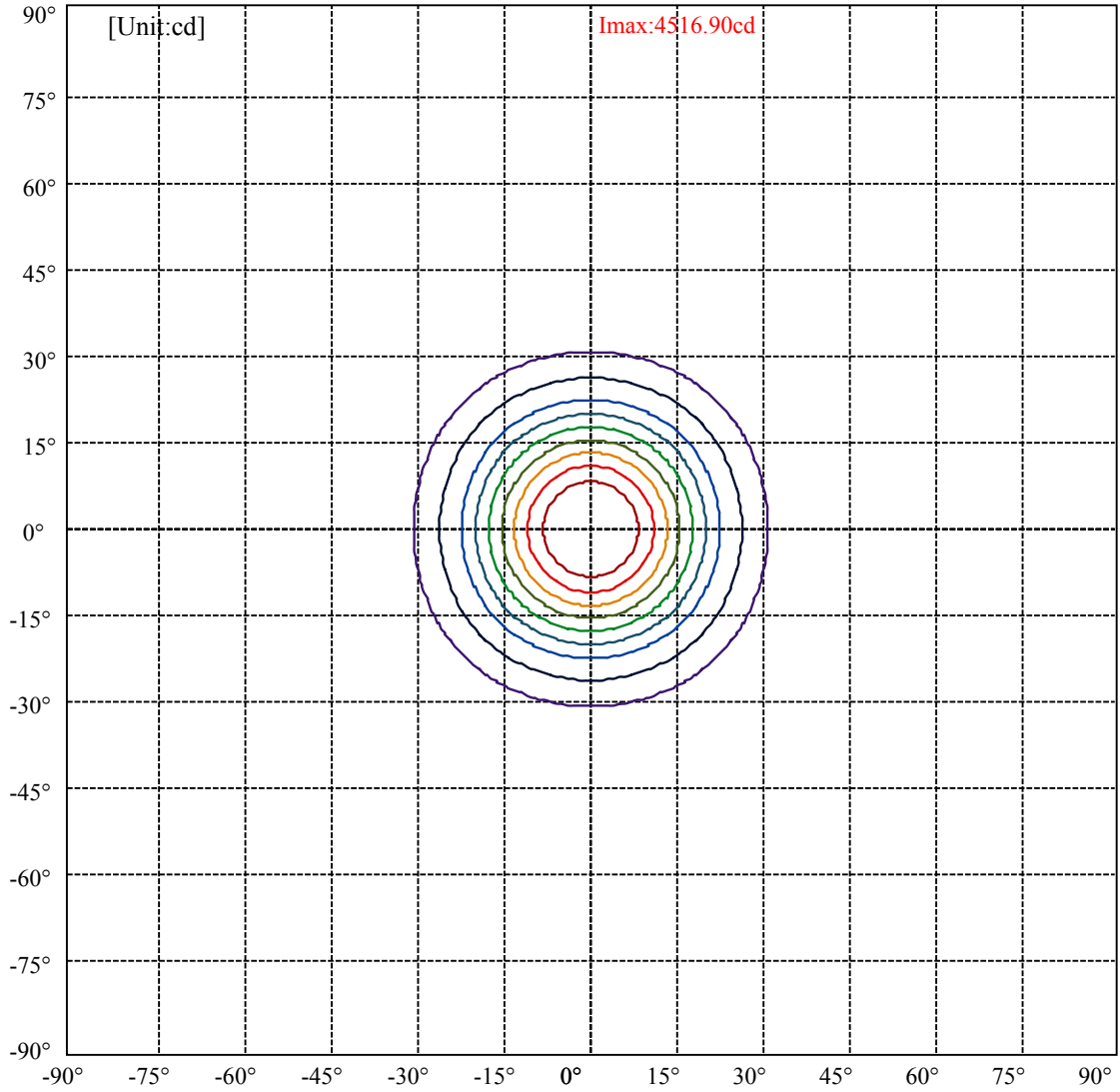
Field angle(10%Imax):C0/180Left:32.4 Right:28.4

:C90/270Left:32.4 Right:28.4

Beam Angle(50%Imax):C0/180Left:19.4 Right:15.4

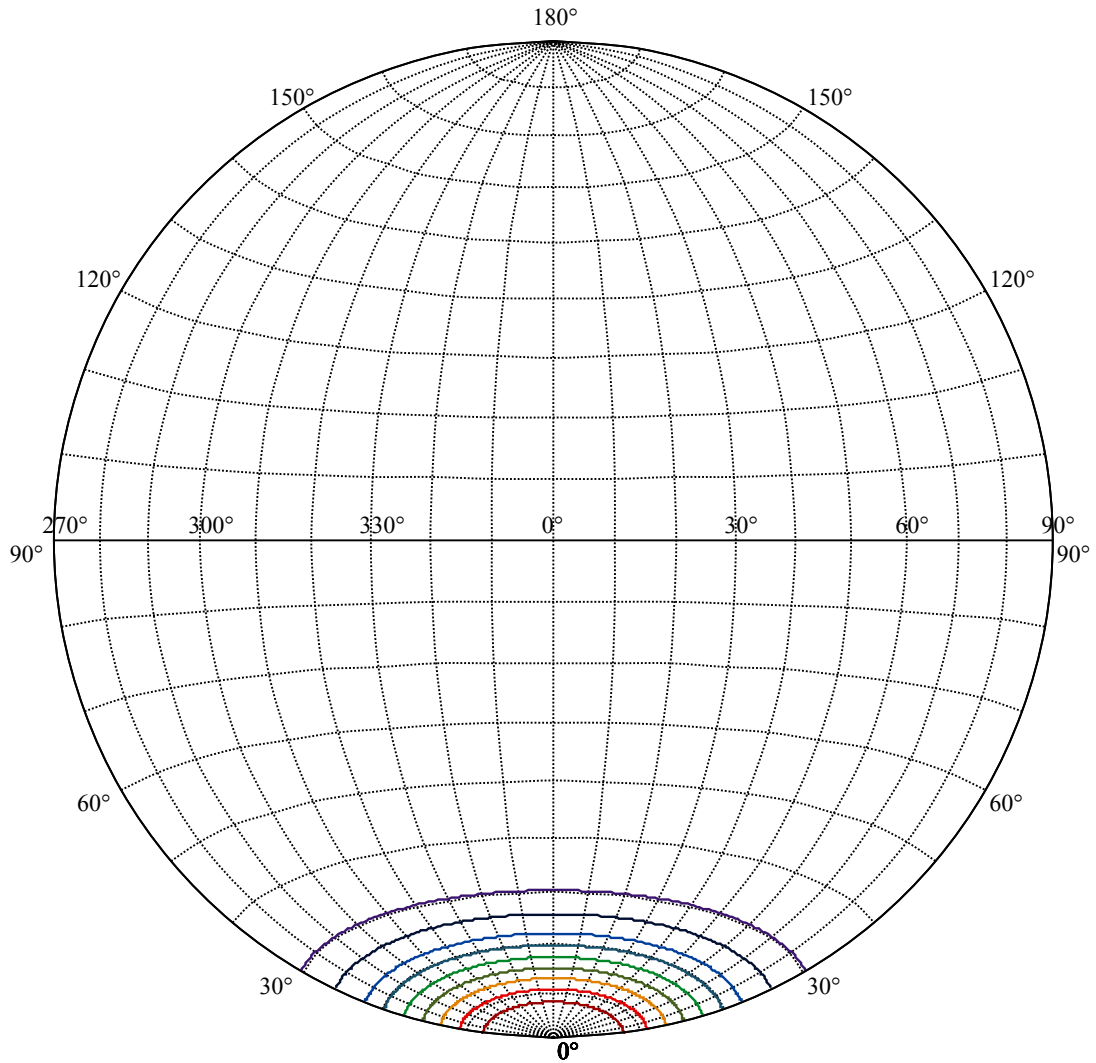
:C90/270Left:19.4 Right:15.4





(10%Imax) 451.69	—
(20%Imax) 903.38	—
(30%Imax) 1355.07	—
(40%Imax) 1806.76	—
(50%Imax) 2258.45	—
(60%Imax) 2710.14	—
(70%Imax) 3161.83	—
(80%Imax) 3613.52	—
(90%Imax) 4065.21	—





House

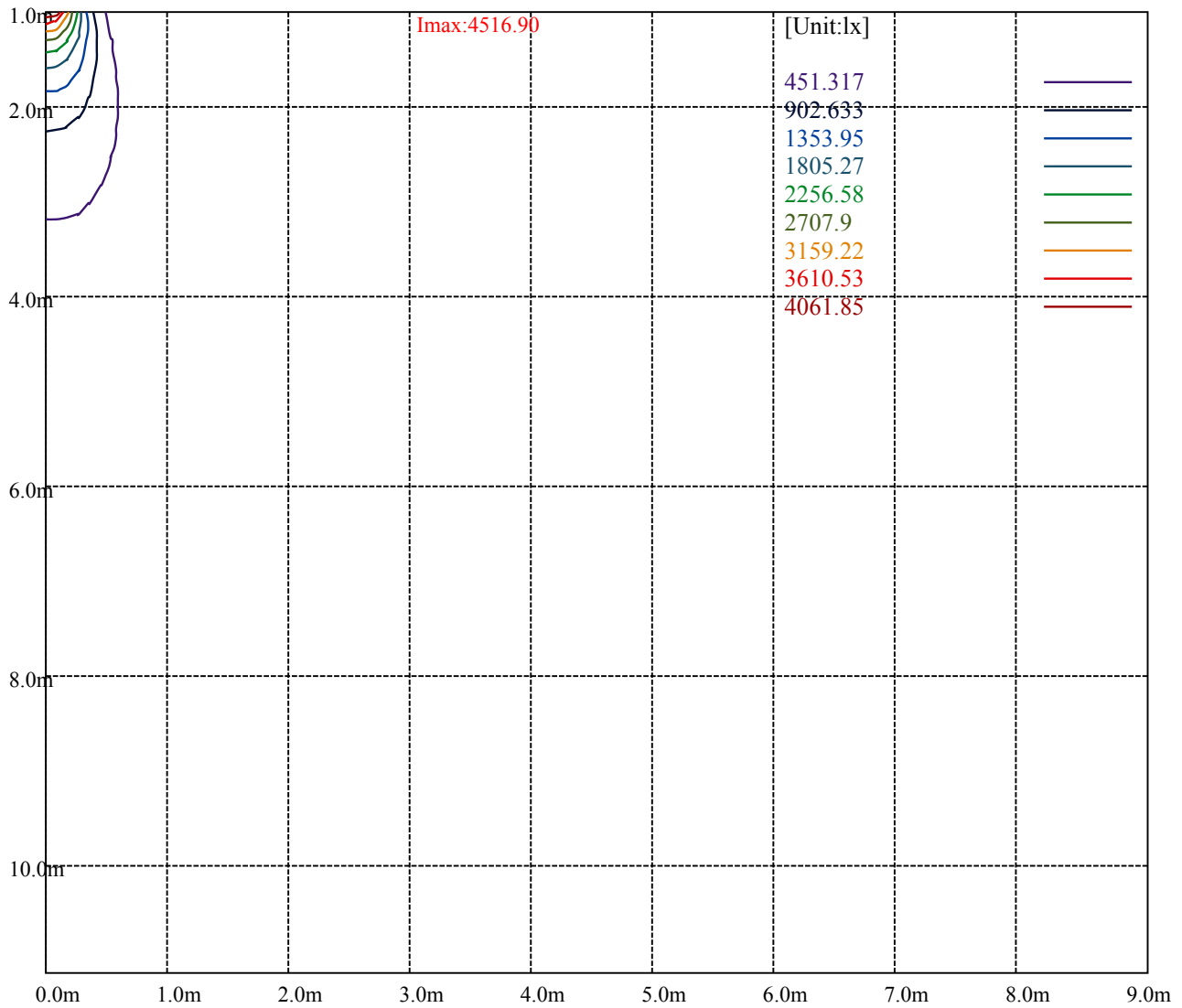
[Unit:cd]

Road

**Imax:4516.90**

(10%Imax)	451.69	—
(20%Imax)	903.38	—
(30%Imax)	1355.07	—
(40%Imax)	1806.76	—
(50%Imax)	2258.45	—
(60%Imax)	2710.14	—
(70%Imax)	3161.83	—
(80%Imax)	3613.52	—
(90%Imax)	4065.21	—





Luminance Table

$\gamma$	45	50	55	60	65	70	75	80	85
C0	0	0	0	0	0	0	0	0	0
C45	0	0	0	0	0	0	0	0	0
C90	0	0	0	0	0	0	0	0	0

L(Hor)(65)	L(Ver)(65)	L45(65)	L(Hor)(75)	L(Ver)(75)	L45(75)	L(Hor)(85)	L(Ver)(85)	L45(85)
0	0	0	0	0	0	0	0	0

Glare Table

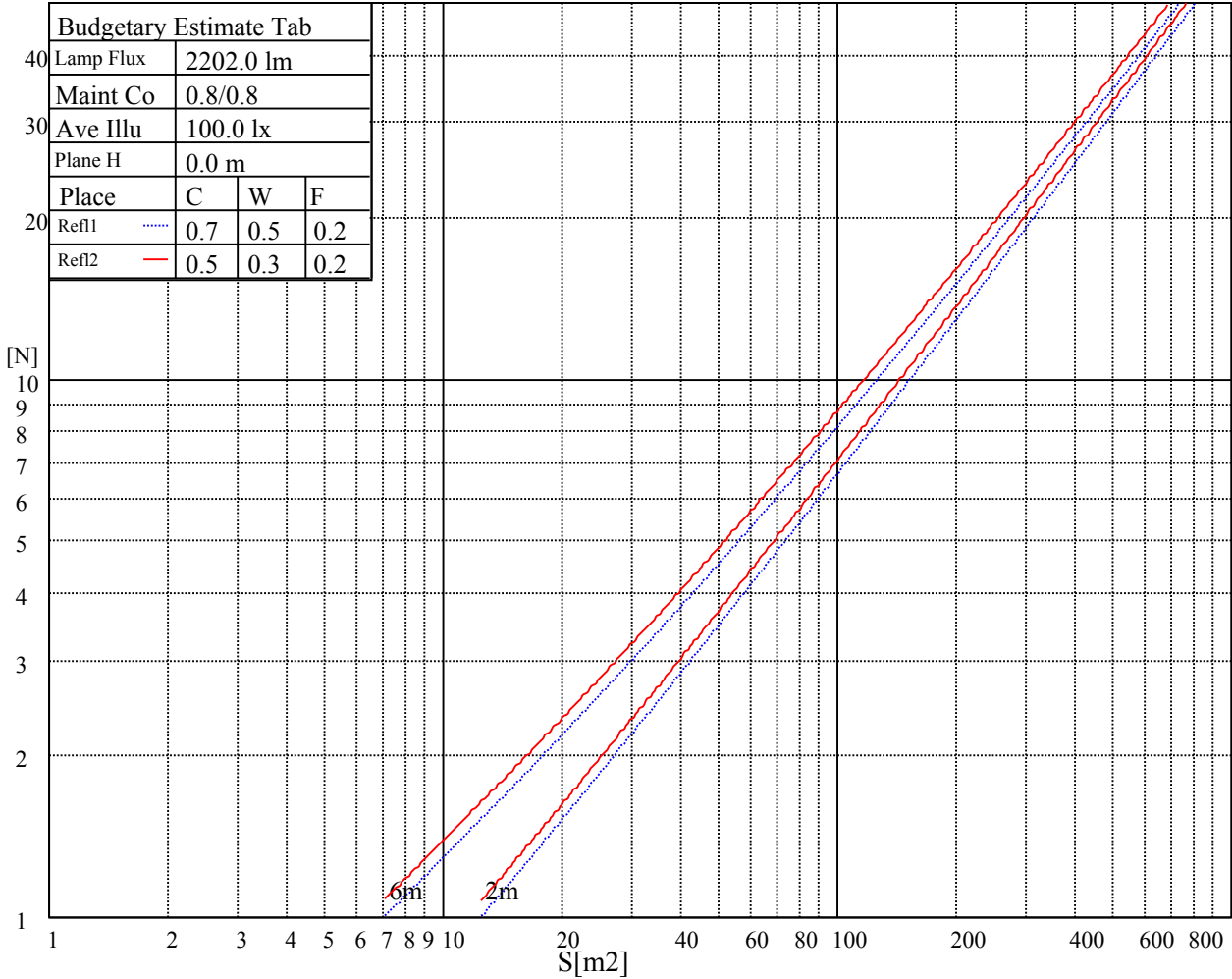
Glare	Quality	Service Values Illuminance(lx)							
1.15	A	2000	1000	500	<=300				
1.5	B		2000	1000	500	<=300			
1.85	C			2000	1000	500	<=300		
2.2	D				2000	1000	500	<=300	
2.55	E					2000	1000	500	<=300
		a	b	c	d	e	f	g	h

Luminance Limiting Curve

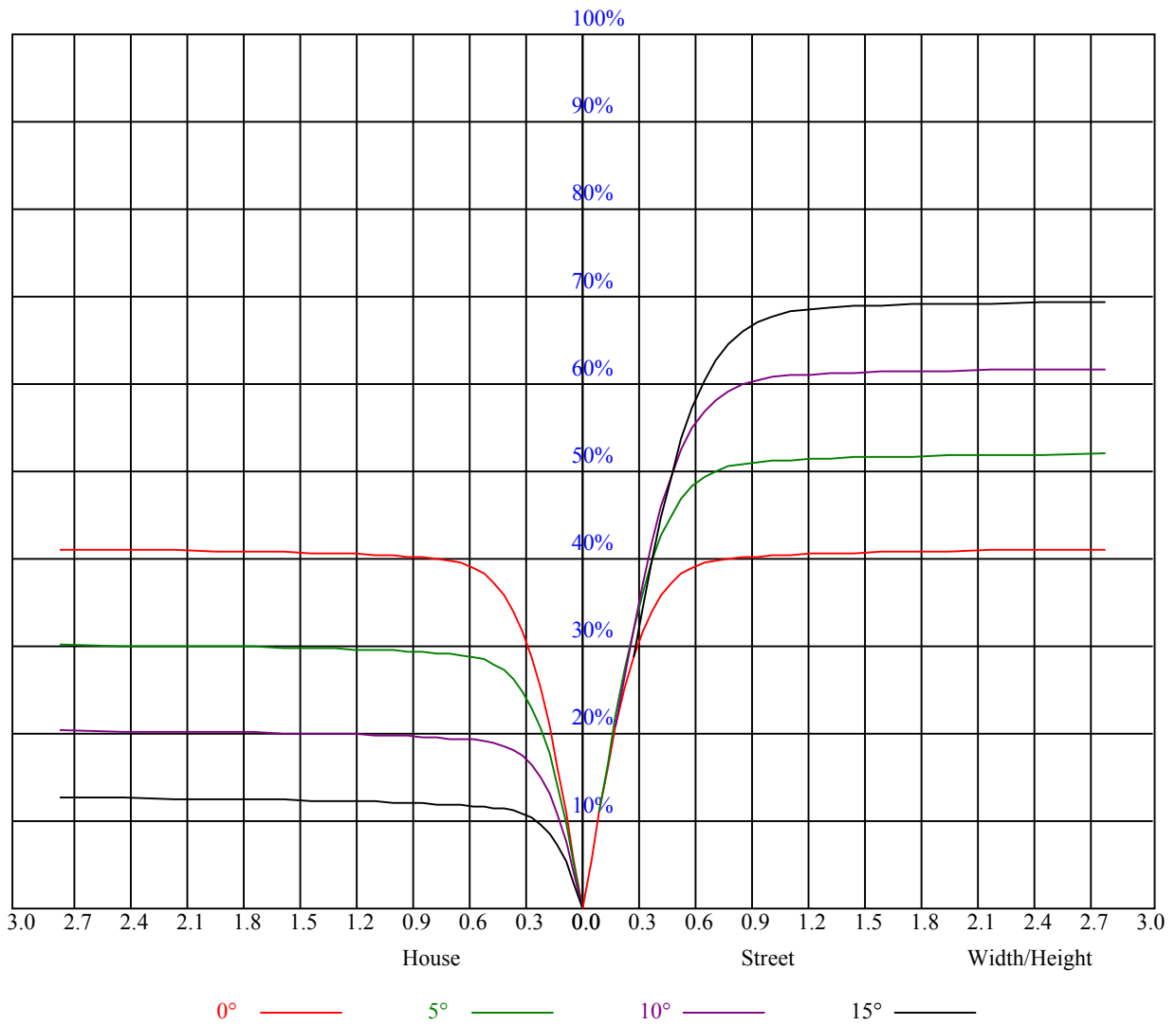


Illumination assessment according UGR										
Rf of Ceiling	70	70	50	50	30	70	70	50	50	30
Rf of Wall	50	30	50	30	30	50	30	50	30	30
Rf of Floor	20	20	20	20	20	20	20	20	20	20
Room dimensions	Viewed crosswise					Viewed endwise				
X	Y									
2H	2H	非数字	非数字	非数字	非数字	非数字	非数字	非数字	非数字	非数字
	3H	非数字	非数字	非数字	非数字	非数字	非数字	非数字	非数字	非数字
	4H	非数字	非数字	非数字	非数字	非数字	非数字	非数字	非数字	非数字
	6H	非数字	非数字	非数字	非数字	非数字	非数字	非数字	非数字	非数字
	8H	非数字	非数字	非数字	非数字	非数字	非数字	非数字	非数字	非数字
	12H	非数字	非数字	非数字	非数字	非数字	非数字	非数字	非数字	非数字
4H	2H	非数字	非数字	非数字	非数字	非数字	非数字	非数字	非数字	非数字
	3H	非数字	非数字	非数字	非数字	非数字	非数字	非数字	非数字	非数字
	4H	非数字	非数字	非数字	非数字	非数字	非数字	非数字	非数字	非数字
	6H	非数字	非数字	非数字	非数字	非数字	非数字	非数字	非数字	非数字
	8H	非数字	非数字	非数字	非数字	非数字	非数字	非数字	非数字	非数字
	12H	非数字	非数字	非数字	非数字	非数字	非数字	非数字	非数字	非数字
8H	4H	非数字	非数字	非数字	非数字	非数字	非数字	非数字	非数字	非数字
	6H	非数字	非数字	非数字	非数字	非数字	非数字	非数字	非数字	非数字
	8H	非数字	非数字	非数字	非数字	非数字	非数字	非数字	非数字	非数字
	12H	非数字	非数字	非数字	非数字	非数字	非数字	非数字	非数字	非数字
12H	4H	非数字	非数字	非数字	非数字	非数字	非数字	非数字	非数字	非数字
	6H	非数字	非数字	非数字	非数字	非数字	非数字	非数字	非数字	非数字
	8H	非数字	非数字	非数字	非数字	非数字	非数字	非数字	非数字	非数字
Variation with the observer position at spacings:										
S = 1.0H	非数字/非数字					非数字/非数字				
S = 1.5H	非数字/非数字					非数字/非数字				
S = 2.0H	非数字/非数字					非数字/非数字				
Standard tables:	BK0					BK0				
Uncorrected UGR	负无穷大					负无穷大				

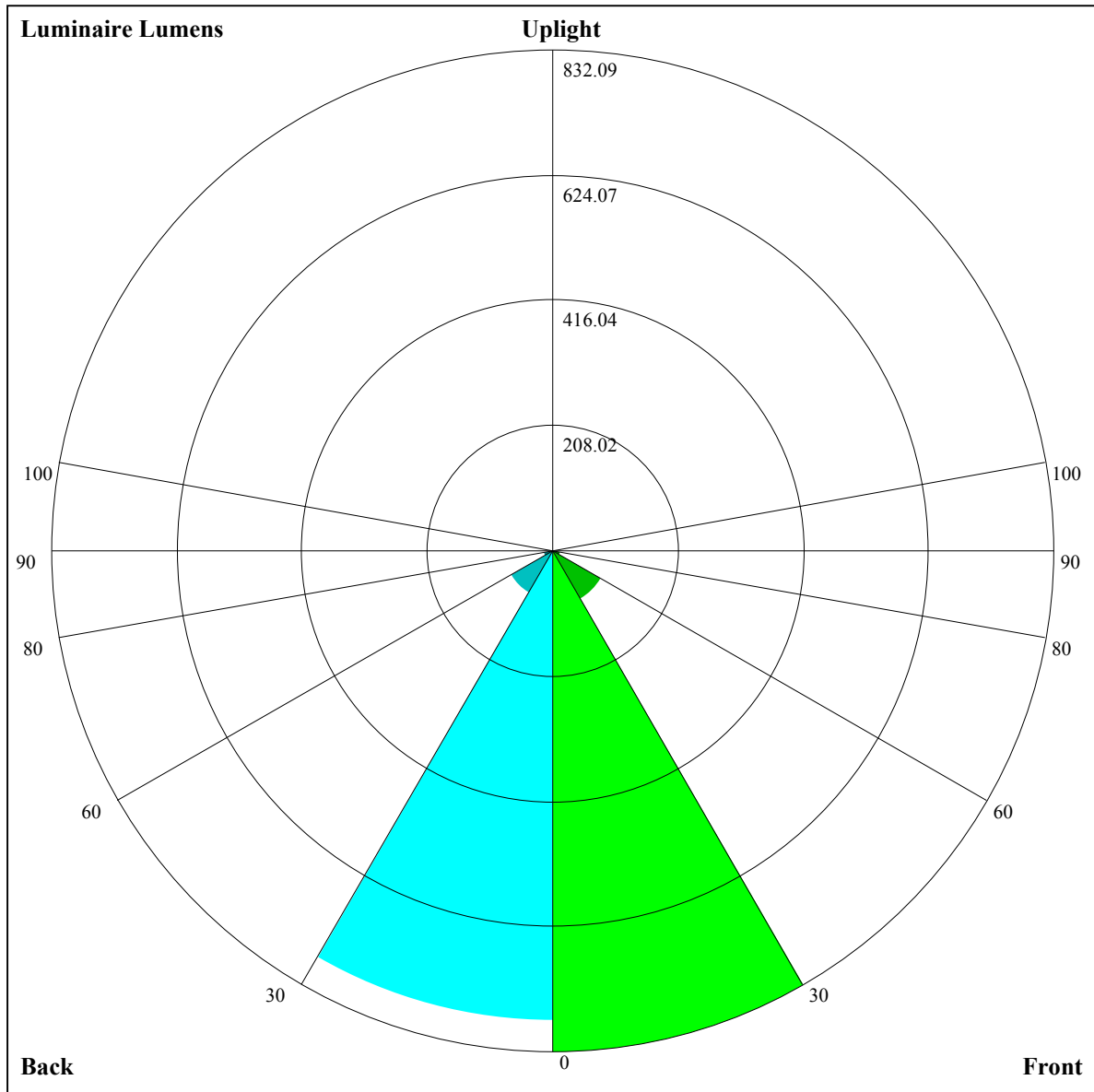
UGR calculation is based on CIE Publ. 117 ,S/H = 0.25



RHOCC	80			70			50			30			10			0
RHOW	50	30	10	50	30	10	50	30	10	50	30	10	50	30	10	0
RCR	COEFFICIENTS OF UTILIZATION RHOF=20 CU															
0	0.99	0.99	0.99	0.96	0.96	0.96	0.92	0.92	0.92	0.88	0.88	0.88	0.85	0.85	0.85	0.83
1	0.92	0.90	0.89	0.91	0.89	0.87	0.87	0.86	0.85	0.84	0.83	0.82	0.81	0.81	0.80	0.78
2	0.87	0.84	0.82	0.86	0.83	0.81	0.83	0.81	0.79	0.81	0.79	0.77	0.78	0.77	0.76	0.74
3	0.82	0.79	0.76	0.81	0.78	0.75	0.79	0.76	0.74	0.77	0.75	0.73	0.75	0.73	0.72	0.71
4	0.78	0.74	0.71	0.77	0.74	0.71	0.76	0.73	0.70	0.74	0.71	0.69	0.73	0.70	0.69	0.67
5	0.75	0.70	0.67	0.74	0.70	0.67	0.72	0.69	0.67	0.71	0.68	0.66	0.70	0.67	0.65	0.64
6	0.71	0.67	0.64	0.71	0.67	0.64	0.69	0.66	0.63	0.68	0.65	0.63	0.67	0.65	0.63	0.62
7	0.68	0.64	0.61	0.68	0.64	0.61	0.67	0.63	0.61	0.66	0.63	0.60	0.65	0.62	0.60	0.59
8	0.65	0.61	0.59	0.65	0.61	0.58	0.64	0.61	0.58	0.63	0.60	0.58	0.63	0.60	0.58	0.57
9	0.63	0.59	0.56	0.63	0.59	0.56	0.62	0.58	0.56	0.61	0.58	0.56	0.60	0.58	0.55	0.55
10	0.61	0.57	0.54	0.60	0.56	0.54	0.60	0.56	0.54	0.59	0.56	0.54	0.58	0.56	0.53	0.53







Luminaire Lumens:

FL=832.09,FM=92.88,FH=14.56,FVH=4.85

BL=780.08,BM=79.51,BH=15.05,BVH=4.83

UL=0,UH=0

BUG Rating:B2-U0-G0

Intensity data(cd)

C/γ(°)	0.0	1.0	2.0	3.0	4.0	5.0	6.0	7.0	8.0
0.0	4527.94	4547.26	4567.15	4557.21	4528.53	4489.32	4427.87	4342.43	4184.42
45.0	4503.95	4520.92	4572.42	4576.52	4560.72	4536.14	4494.59	4413.83	4268.10
90.0	4530.29	4556.62	4543.16	4509.22	4477.61	4409.14	4272.20	4151.64	4018.21
135.0	4490.49	4514.48	4530.87	4500.44	4462.98	4420.26	4335.99	4185.59	4053.33
180.0	4527.94	4521.51	4516.24	4484.05	4432.55	4377.54	4299.12	4160.42	4008.26
225.0	4503.95	4491.08	4457.72	4403.88	4365.25	4306.73	4216.60	4036.94	3867.81
270.0	4530.29	4484.64	4462.40	4458.30	4427.87	4411.48	4368.18	4295.61	4183.25
315.0	4490.49	4482.30	4485.22	4486.98	4462.40	4413.24	4357.06	4272.79	4097.22
360.0	4527.94	4547.26	4567.15	4557.21	4528.53	4489.32	4427.87	4342.43	4184.42
C/γ(°)	9.0	10.0	11.0	12.0	13.0	14.0	15.0	16.0	17.0
0.0	4038.11	3887.71	3691.07	3523.70	3289.02	3085.36	2877.02	2668.10	2427.57
45.0	4148.13	4019.38	3850.25	3698.10	3528.38	3331.74	3082.44	2872.93	2672.78
90.0	3874.25	3690.49	3521.36	3331.74	3132.18	2882.29	2678.63	2483.75	2297.07
135.0	3914.04	3741.40	3590.41	3366.27	3170.22	2968.90	2758.81	2516.53	2329.25
180.0	3811.04	3646.01	3472.78	3283.76	3023.92	2819.67	2627.72	2424.06	2196.41
225.0	3694.58	3491.51	3307.75	3116.97	2860.05	2656.98	2418.79	2232.11	2058.29
270.0	4049.23	3879.52	3655.37	3473.37	3279.07	3018.06	2824.94	2623.04	2390.70
315.0	3932.77	3767.15	3564.66	3386.76	3192.46	2992.31	2732.47	2534.67	2339.20
360.0	4038.11	3887.71	3691.07	3523.70	3289.02	3085.36	2877.02	2668.10	2427.57
C/γ(°)	18.0	19.0	20.0	21.0	22.0	23.0	24.0	25.0	26.0
0.0	2247.32	2072.93	1894.43	1680.82	1516.38	1138.96	1138.96	1078.16	964.51
45.0	2475.56	2246.15	2065.90	1849.37	1674.97	1512.28	1332.62	1202.11	1076.29
90.0	2072.34	1896.77	1679.65	1518.13	1142.01	1142.01	1081.26	964.28	853.49
135.0	2149.00	1975.19	1759.83	1597.14	1443.22	1271.75	1142.42	1024.79	878.48
180.0	2026.11	1837.67	1664.44	1463.71	1320.91	1165.83	1047.03	931.15	791.28
225.0	1877.46	1658.00	1501.16	1156.05	1156.05	1066.10	950.41	841.85	737.27
270.0	2209.28	2017.33	1841.76	1631.08	1473.66	1330.27	1200.94	1051.71	937.00
315.0	2158.37	1937.15	1765.10	1601.82	1312.13	1151.84	1151.84	1006.59	897.03
360.0	2247.32	2072.93	1894.43	1680.82	1516.38	1138.96	1138.96	1078.16	964.51
C/γ(°)	27.0	28.0	29.0	30.0	31.0	32.0	33.0	34.0	35.0
0.0	822.59	720.88	625.84	538.70	446.53	378.76	314.38	243.75	196.69
45.0	956.32	815.86	709.94	613.96	531.44	438.98	369.92	306.13	306.13
90.0	721.41	623.38	535.83	459.34	370.39	305.49	248.72	189.73	150.99
135.0	766.12	636.78	547.83	471.16	400.35	320.18	304.96	304.96	167.90
180.0	688.28	595.82	510.37	416.74	348.85	302.62	302.62	174.05	140.45
225.0	614.08	525.06	448.46	362.31	299.81	232.98	187.97	151.57	121.14
270.0	825.81	694.72	597.57	509.20	419.08	353.53	306.13	306.13	176.50
315.0	791.87	662.53	567.61	485.74	398.07	334.22	275.11	223.61	170.65
360.0	822.59	720.88	625.84	538.70	446.53	378.76	314.38	243.75	196.69
C/γ(°)	36.0	37.0	38.0	39.0	40.0	41.0	42.0	43.0	44.0
0.0	158.01	126.23	95.27	76.49	62.74	50.91	44.54	40.20	36.28
45.0	186.80	148.82	112.07	89.13	68.35	57.12	48.92	43.19	38.33
90.0	119.91	90.59	72.92	57.24	48.98	43.01	38.98	35.93	33.01
135.0	126.35	100.37	80.18	65.02	52.20	45.47	40.03	36.93	34.41
180.0	112.71	85.38	69.00	57.24	47.40	42.19	38.62	35.11	33.07
225.0	91.41	73.74	60.45	50.91	43.07	39.03	36.05	33.07	31.08
270.0	141.04	106.34	85.27	68.88	57.00	46.82	41.43	37.86	35.11
315.0	136.01	108.62	86.79	66.54	55.19	47.23	40.91	37.45	34.29
360.0	158.01	126.23	95.27	76.49	62.74	50.91	44.54	40.20	36.28

Intensity data(cd)

C/γ(°)	45.0	46.0	47.0	48.0	49.0	50.0	51.0	52.0	53.0
0.0	33.83	31.89	29.79	28.44	27.21	26.16	24.93	24.05	23.23
45.0	35.41	33.12	31.31	29.38	28.09	26.86	25.81	24.58	23.70
90.0	31.19	29.55	27.92	26.80	25.75	24.64	23.82	23.00	22.06
135.0	32.01	30.43	29.03	27.92	26.57	25.52	24.70	23.94	22.88
180.0	31.31	29.44	28.21	27.04	26.04	24.87	24.05	23.23	22.41
225.0	29.44	27.68	26.51	25.40	24.17	23.29	22.53	21.71	20.78
270.0	32.25	30.49	28.56	27.21	25.75	24.81	23.88	23.06	22.24
315.0	32.30	30.55	29.09	27.45	26.45	25.40	24.46	23.41	22.59
360.0	33.83	31.89	29.79	28.44	27.21	26.16	24.93	24.05	23.23
C/γ(°)	54.0	55.0	56.0	57.0	58.0	59.0	60.0	61.0	62.0
0.0	22.41	21.42	20.72	19.72	18.96	18.26	17.50	16.91	16.33
45.0	22.71	21.83	21.07	20.19	19.49	18.73	18.02	17.26	16.62
90.0	21.30	20.60	19.66	18.90	18.26	17.62	16.85	16.21	15.80
135.0	22.18	21.42	20.54	19.90	19.08	18.32	17.73	17.09	16.39
180.0	21.42	20.66	19.78	19.02	18.38	17.67	17.09	16.44	15.92
225.0	20.07	19.37	18.67	17.85	17.32	16.74	16.04	15.51	14.86
270.0	21.24	20.54	19.84	18.90	18.20	17.62	17.03	16.27	15.68
315.0	21.77	20.95	20.25	19.49	18.61	17.97	17.38	16.68	16.09
360.0	22.41	21.42	20.72	19.72	18.96	18.26	17.50	16.91	16.33
C/γ(°)	63.0	64.0	65.0	66.0	67.0	68.0	69.0	70.0	71.0
0.0	15.63	15.16	14.75	14.28	13.93	13.99	14.92	16.68	16.04
45.0	16.09	15.63	15.04	14.57	14.10	13.64	13.28	12.93	12.47
90.0	15.33	14.81	14.46	14.10	13.81	13.58	13.28	13.17	13.23
135.0	15.98	15.51	15.10	14.51	14.28	13.99	13.99	14.98	16.44
180.0	15.39	15.04	15.04	15.74	18.08	20.13	20.66	20.42	21.54
225.0	14.46	13.99	13.46	13.17	12.82	12.47	12.06	11.76	11.59
270.0	15.10	14.63	14.22	13.64	13.28	12.99	12.70	12.41	12.17
315.0	15.63	15.16	14.63	14.16	13.87	13.69	14.40	15.16	15.74
360.0	15.63	15.16	14.75	14.28	13.93	13.99	14.92	16.68	16.04
C/γ(°)	72.0	73.0	74.0	75.0	76.0	77.0	78.0	79.0	80.0
0.0	16.04	17.62	15.33	17.03	14.81	15.51	14.28	14.16	13.11
45.0	12.17	11.88	11.53	11.24	11.00	10.77	10.53	10.30	10.07
90.0	13.28	13.17	13.34	13.69	13.40	13.17	12.58	11.41	10.24
135.0	17.62	17.85	18.79	19.66	19.25	18.55	16.74	15.39	13.17
180.0	22.30	19.96	20.42	19.61	18.84	18.20	17.67	15.92	12.58
225.0	11.29	11.00	10.77	10.59	10.30	10.07	9.89	9.60	9.48
270.0	12.17	12.11	12.11	12.76	12.64	12.52	12.17	11.29	10.48
315.0	16.68	17.67	17.44	17.32	16.04	14.46	13.64	11.59	10.12
360.0	16.04	17.62	15.33	17.03	14.81	15.51	14.28	14.16	13.11
C/γ(°)	81.0	82.0	83.0	84.0	85.0	86.0	87.0	88.0	89.0
0.0	10.24	9.25	9.07	8.84	8.72	8.54	8.31	8.13	8.02
45.0	9.77	9.54	9.31	9.07	8.90	8.78	8.43	8.19	8.08
90.0	9.42	9.19	9.07	8.95	8.72	8.37	8.08	7.96	7.90
135.0	11.59	9.83	9.31	9.07	9.01	8.49	8.25	8.02	7.84
180.0	9.71	9.19	8.95	8.84	8.54	8.19	8.08	8.08	7.96
225.0	9.25	9.07	8.90	8.66	8.31	8.13	8.02	7.90	7.90
270.0	9.60	9.19	9.01	8.90	8.78	8.37	8.19	8.02	7.90
315.0	9.60	9.36	9.19	9.01	9.13	8.37	8.19	7.96	7.90
360.0	10.24	9.25	9.07	8.84	8.72	8.54	8.31	8.13	8.02

Intensity data(cd)

C/γ(°)	90.0
0.0	8.02
45.0	7.96
90.0	7.84
135.0	7.90
180.0	7.84
225.0	7.90
270.0	7.84
315.0	7.84
360.0	8.02